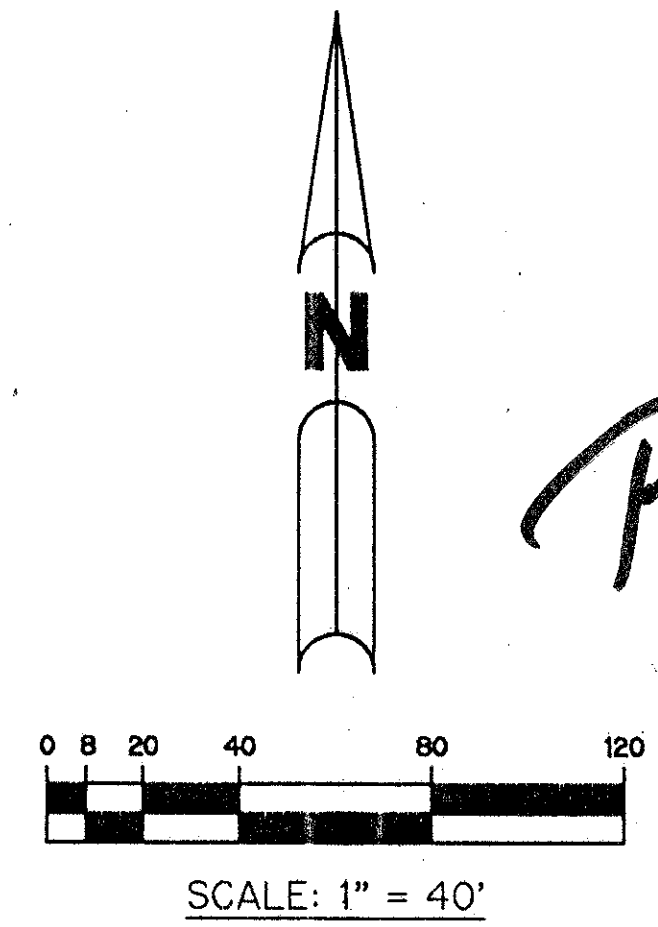
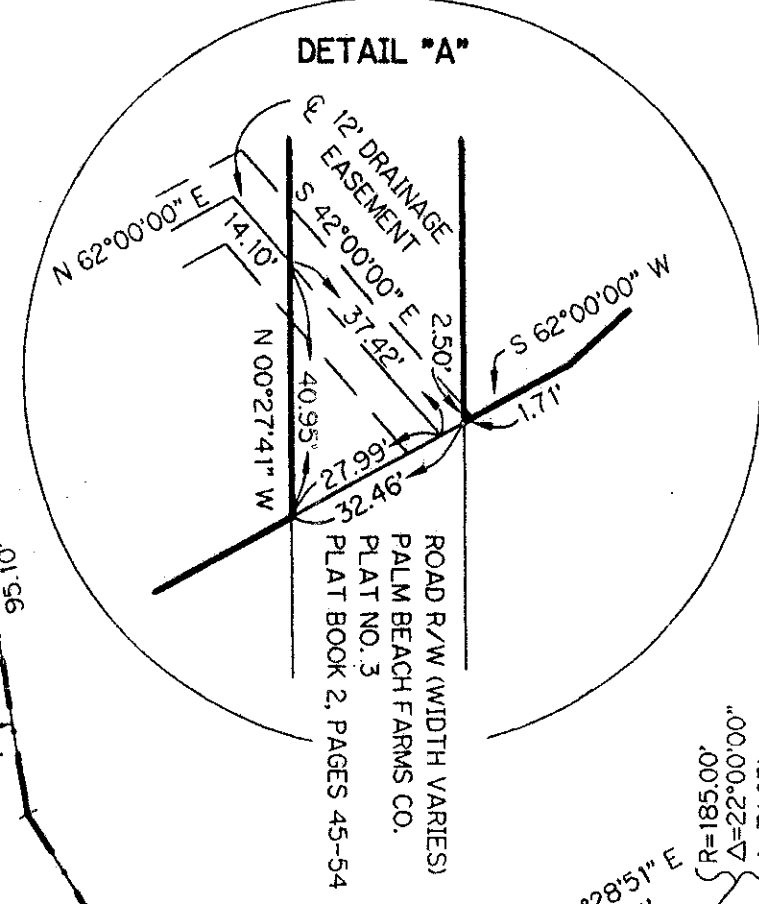
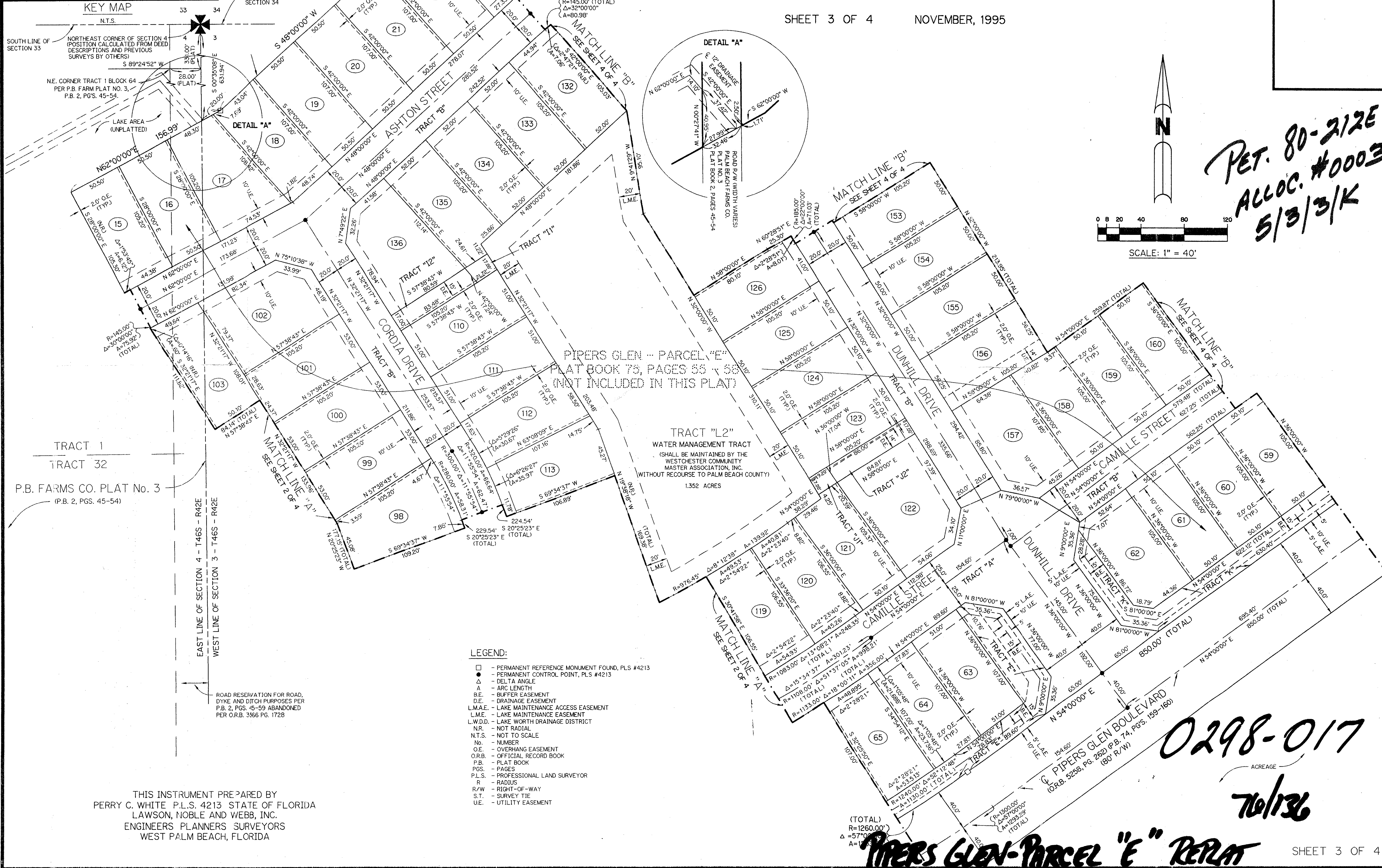
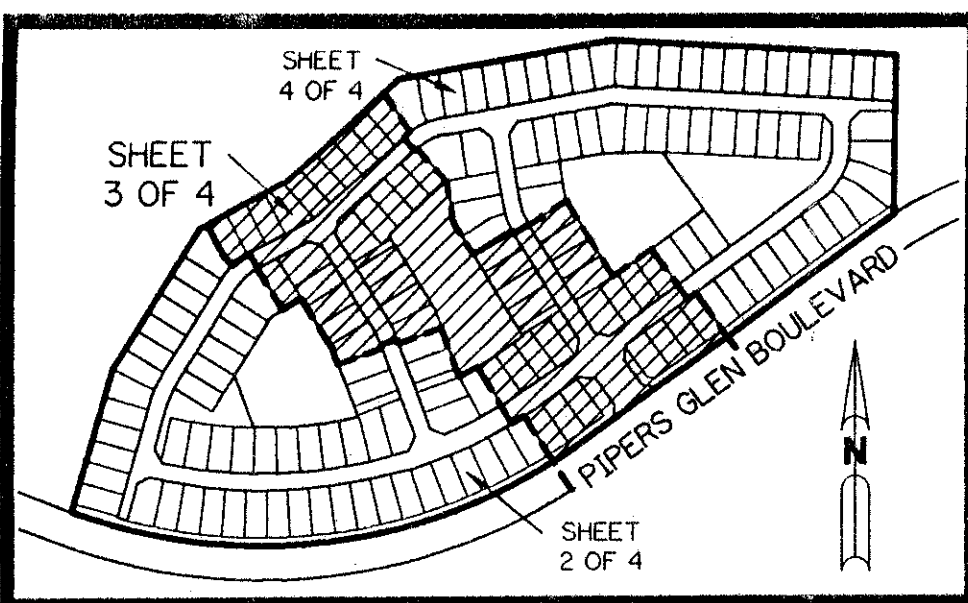


# PIPERS GLEN - PARCEL "E" REPLAT 136

BEING A PARCEL OF LAND LYING IN SECTIONS 3 AND 4, TOWNSHIP 46 SOUTH, RANGE 42 EAST, AND A REPLAT OF LOTS 6, 7, 13, 14, 24, 25, 33, 34 AND 48 THROUGH 51 OF THE PLAT OF PIPERS GLEN - PARCEL "E" AS RECORDED IN PLAT BOOK 75, PAGES 55 THROUGH 58, INCLUSIVE, OF THE PUBLIC RECORDS OF PALM BEACH COUNTY, FLORIDA.

SHEET 3 OF 4 NOVEMBER, 1995



*PET. 80-212E  
ALLOC. #0003  
5/3/3/K*

- LEGEND:**
- - PERMANENT REFERENCE MONUMENT FOUND, PLS #4213
  - - PERMANENT CONTROL POINT, PLS #4213
  - △ - DELTA ANGLE
  - A - ARC LENGTH
  - B.E. - BUFFER EASEMENT
  - D.E. - DRAINAGE EASEMENT
  - L.M.A.E. - LAKE MAINTENANCE ACCESS EASEMENT
  - L.M.E. - LAKE MAINTENANCE EASEMENT
  - L.W.D.D. - LAKE WORTH DRAINAGE DISTRICT
  - N.R. - NOT RADIAL
  - N.T.S. - NOT TO SCALE
  - No. - NUMBER
  - O.E. - OVERHANG EASEMENT
  - O.R.B. - OFFICIAL RECORD BOOK
  - P.B. - PLAT BOOK
  - PGS. - PAGES
  - P.L.S. - PROFESSIONAL LAND SURVEYOR
  - R - RADIUS
  - R/W - RIGHT-OF-WAY
  - S.T. - SURVEY TIE
  - U.E. - UTILITY EASEMENT

THIS INSTRUMENT PREPARED BY  
PERRY C. WHITE P.L.S. 4213 STATE OF FLORIDA  
LAWSON, NOBLE AND WEBB, INC.  
ENGINEERS PLANNERS SURVEYORS  
WEST PALM BEACH, FLORIDA

SUBDIVISION \* PIPERS GLEN  
BOOK 76 PAGE 136  
FLOOD ZONE β FLOOD MAP # 200A  
QUAD # 36-51 ZONING RT  
SS 80-212 ZIP CODE 33437  
PID NAME SAME

*PIPERS GLEN - PARCEL "E" REPLAT*

*0298-017*

*70/136*